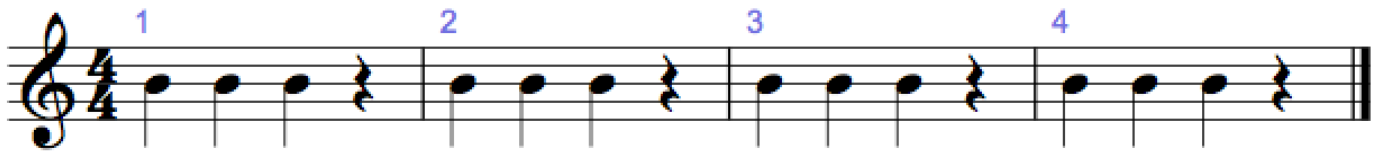
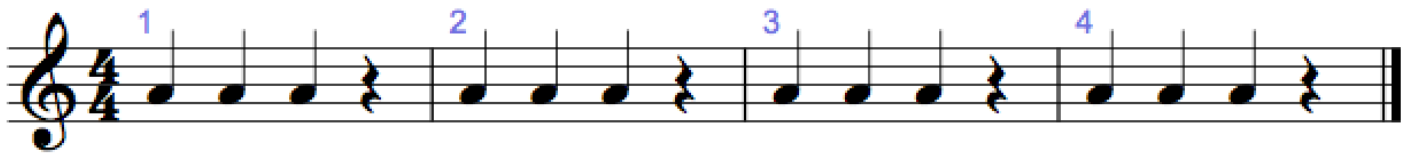


# White Belt (B, A, G)

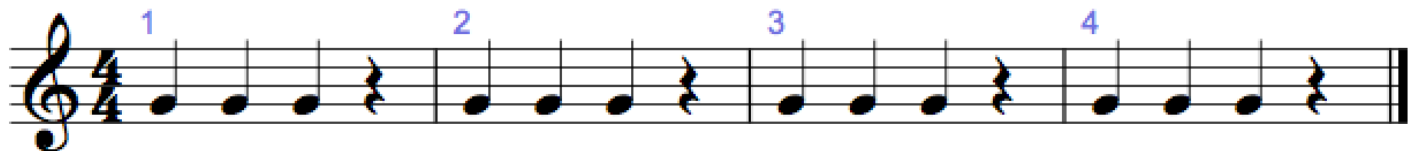
Let's Play B



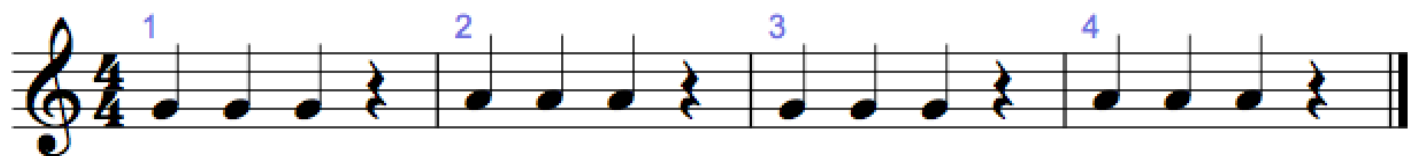
Let's Play A



Let's Play G



Changing Notes



### Watch for Rests



### Three Note Quiz



# Yellow Belt (B, A, G)

Half Time Show



Stick Together



Quick Deep Breaths



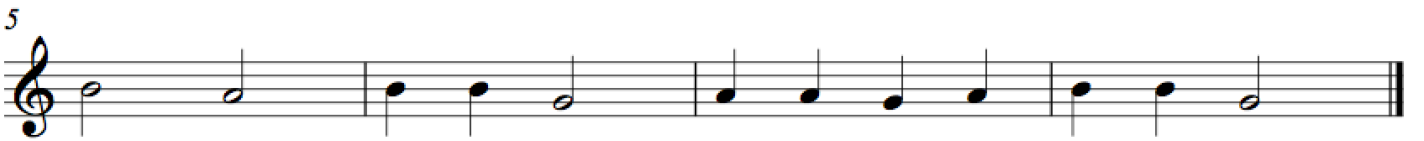
Hot Cross Buns



Suo Gan (Wales)



A Song with No Name



Gently Sleep



# Orange Belt (B, A, G)

Hop Old Squirrel



Three Blind Mice



The Bell Tower (England)



Good News



Marching Too!

Musical notation for 'Marching Too!' in 2/4 time. The first staff contains 8 measures of music. The second staff begins with a measure rest (9) and continues with 8 measures of music, ending with a double bar line.

Down by the Station

Musical notation for 'Down by the Station' in 2/4 time. The first staff contains 6 measures of music. The second staff begins with a measure rest (7) and continues with 6 measures of music, ending with a double bar line.

Merrily We Roll Along

Musical notation for 'Merrily We Roll Along' in 2/4 time. The staff contains 8 measures of music, ending with a double bar line and repeat dots.

Pitter Patter

Musical notation for 'Pitter Patter' in 2/4 time. The staff contains 8 measures of music, with measure rests in the 4th and 8th measures, ending with a double bar line.

# Green Belt (Low E)

Star Light, Star Bright

Musical notation for 'Star Light, Star Bright' in 4/4 time, starting on a Low E string. The melody consists of two lines of music. The first line contains four measures of music, and the second line contains four measures, ending with a double bar line. Red dots are placed under the notes in the first, third, and fifth measures of each line to indicate fingerings.

# Flower Song

Musical notation for 'Flower Song' in 4/4 time, starting on a Low E string. The melody consists of two lines of music. The first line contains four measures of music, and the second line contains four measures, ending with a double bar line. Red dots are placed under the notes in the first, third, and fifth measures of each line to indicate fingerings.

# Ding Dong Dell

Musical notation for 'Ding Dong Dell' in 2/4 time, starting on a Low E string. The melody consists of two lines of music. The first line contains four measures of music, and the second line contains four measures, ending with a double bar line. Red dots are placed under the notes in the first, third, and fifth measures of each line to indicate fingerings.

# Hosisipa (Sioux)

Musical notation for 'Hosisipa (Sioux)' in 2/4 time, starting on a Low E string. The melody consists of a single line of music with eight measures, ending with a double bar line. Red dots are placed under the notes in the first, third, and fifth measures to indicate fingerings.

### A Tisket a Tasket

Musical notation for the song "A Tisket a Tasket". It consists of two staves in 2/4 time. The first staff contains 7 measures of music, and the second staff contains 7 measures, starting with a measure rest labeled '8'. The melody is written in treble clef and features a sequence of eighth and quarter notes with red dots below them.

### It's Raining

Musical notation for the song "It's Raining". It consists of two staves in 4/4 time. The first staff contains 4 measures of music, and the second staff contains 5 measures, starting with a measure rest labeled '5'. The melody is written in treble clef and features a sequence of quarter and eighth notes with red dots below them.

### Lil' Sally Walker

Musical notation for the song "Lil' Sally Walker". It consists of two staves in 2/4 time. The first staff contains 7 measures of music, and the second staff contains 7 measures, starting with a measure rest labeled '8'. The melody is written in treble clef and features a sequence of eighth and quarter notes with red dots below them.

### I Got a Letter

Musical notation for the song "I Got a Letter". It consists of two staves in 2/4 time. The first staff contains 6 measures of music, and the second staff contains 7 measures, starting with a measure rest labeled '7'. The melody is written in treble clef and features a sequence of quarter and eighth notes with red dots below them.



# Blue Belt (Low D)

## Petite Waltz

Musical notation for 'Petite Waltz' in 3/4 time. The first staff contains measures 1-6, and the second staff contains measures 7-12. Red dots are placed under the notes in measures 1, 2, 3, 4, 5, 6, 7, 8, 9, 10, 11, and 12.

## Native Lullaby

Musical notation for 'Native Lullaby' in 2/4 time. The first staff contains measures 1-9, and the second staff contains measures 10-18. Red dots are placed under the notes in measures 5, 6, 7, 8, 9, 10, 11, 12, 13, 14, 15, 16, 17, and 18.

## Jolly Old Saint Nick

Musical notation for 'Jolly Old Saint Nick' in 2/4 time. The staff contains measures 1-12. Red dots are placed under the notes in measures 5, 6, 7, 8, 9, 10, 11, and 12. The piece ends with a first and second ending.

## Old Brass Band

Musical notation for 'Old Brass Band' in 2/4 time. The first staff contains measures 1-9, and the second staff contains measures 10-18. Red dots are placed under the notes in measures 5, 6, 7, 8, 9, 10, 11, 12, 13, 14, 15, 16, 17, and 18. The piece ends with a first and second ending.

### Hole in the Bucket

Musical notation for 'Hole in the Bucket' in 3/4 time. The first staff contains measures 1-5, and the second staff contains measures 6-10. Red dots are placed under the notes in measures 2, 3, 4, 5, 6, 7, 8, and 9.

### Recorder Rock

Musical notation for 'Recorder Rock' in 4/4 time. The first staff contains measures 1-5, and the second staff contains measures 6-10. Red dots are placed under the notes in measures 2, 3, 4, 5, 6, 7, 8, 9, and 10.

### Old MacDonald

Musical notation for 'Old MacDonald' in 4/4 time. The first staff contains measures 1-5, the second staff contains measures 6-11, and the third staff contains measures 12-15. Red dots are placed under the notes in measures 2, 3, 4, 5, 6, 7, 8, 9, 10, 11, 12, 13, 14, and 15.

# Dark Blue Belt (High C)

C Ya

Musical notation for 'Dark Blue Belt (High C)'. The piece is in 4/4 time and consists of two staves. The first staff contains four measures of music. The second staff begins with a measure rest labeled '5', followed by four measures of music. The notation includes quarter notes, eighth notes, and a dotted quarter note.

Hallelujah

Musical notation for 'Hallelujah'. The piece is in 4/4 time and consists of two staves. The first staff contains five measures of music. The second staff begins with a measure rest labeled '5', followed by four measures of music. The notation includes quarter notes, eighth notes, and a dotted quarter note.

Volga Boat Song

Musical notation for 'Volga Boat Song'. The piece is in 4/4 time and consists of a single staff. The notation includes quarter notes, eighth notes, and a dotted quarter note. The first two measures of the second half of the piece are marked with a first ending bracket labeled '1.', and the next two measures are marked with a second ending bracket labeled '2.'. The first ending ends with a repeat sign, and the second ending ends with a double bar line.

## Barcarolle



Musical notation for Barcarolle, consisting of two staves. The first staff is in 3/4 time and contains five measures of music. The second staff begins with a measure number '6' and contains two first endings, labeled '1.' and '2.', separated by a repeat sign. The first ending leads to the second ending, which concludes the piece with a double bar line.

## Meow Mix



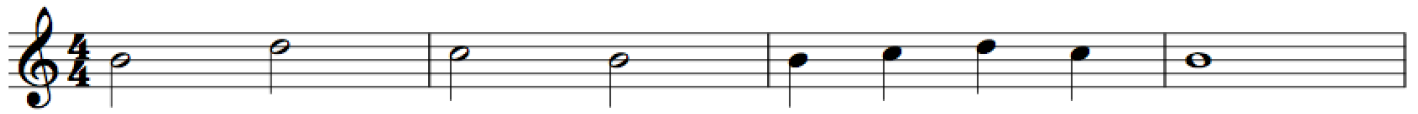
Musical notation for Meow Mix, consisting of a single staff in 2/4 time. The piece consists of eight measures of music, ending with a double bar line.

# Purple Belt (High D)

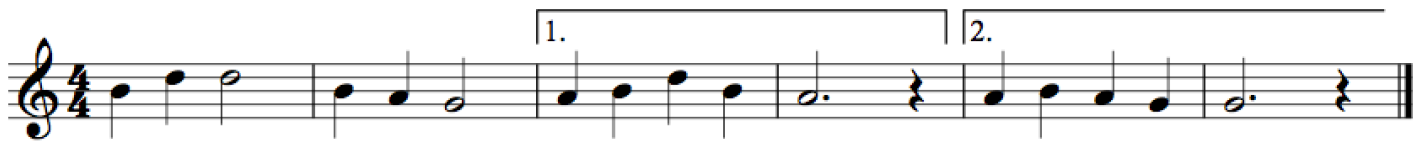
## Aztec Chant



## Turnaround



## Goin' Home



## Let Us Chase the Squirrel



# When the Saints Go Marching In

Musical score for 'When the Saints Go Marching In' in 4/4 time. The score consists of three staves of music. The first staff begins with a treble clef and a 4/4 time signature. The melody is written in a simple, march-like style with quarter and eighth notes, and some phrases are beamed together. The second staff starts at measure 8 and continues the melody. The third staff starts at measure 13 and concludes the piece with a final cadence.

# Scotland's Burning

Musical score for 'Scotland's Burning' in 2/4 time. The score consists of two staves of music. The first staff begins with a treble clef and a 2/4 time signature. The melody is written in a simple, march-like style with quarter and eighth notes. The first two measures of the first staff are marked with a box labeled 'A', and the next two measures are marked with a box labeled 'B'. The second staff starts at measure 9 and continues the melody. The last two measures of the second staff are marked with a box labeled 'C', and the final two measures are marked with a box labeled 'D'. The piece ends with a double bar line and repeat dots.

# Red Belt (F)

Camptown Races

Musical notation for "Red Belt (F)" in 4/4 time. The first staff contains four measures of music. The second staff, starting with a measure rest labeled '5', contains four measures of music. The piece concludes with a double bar line.

# Who's That?

Musical notation for "Who's That?" in 4/4 time. The single staff contains four measures of music. The first measure features a red note on the second line. The piece concludes with a double bar line.

# The Mocking Bird

Musical notation for "The Mocking Bird" in 4/4 time. The first staff contains four measures of music. The second staff, starting with a measure rest labeled '5', contains four measures of music. The piece concludes with a double bar line.

# Snake in a Basket

Musical notation for "Snake in a Basket" in 4/4 time. The single staff contains four measures of music. The first measure features a red note on the second line. The piece concludes with a double bar line.

# Lil' Liza Jane

Musical notation for the first two staves of "Lil' Liza Jane". The first staff is in 4/4 time and contains the first eight measures. The second staff, starting with a measure rest labeled "5", contains the next eight measures. The melody consists of eighth and quarter notes, ending with a whole note.

# Shalom Chaverim (Israel)

Musical notation for the first two staves of "Shalom Chaverim (Israel)". The first staff is in 2/4 time and contains the first eight measures. The second staff, starting with a measure rest labeled "8", contains the next eight measures. The melody features eighth notes, some of which are marked with red dots, and quarter notes.

# White Sails

Musical notation for the first two staves of "White Sails". The first staff is in 2/4 time and contains eight measures, each labeled with a blue number (1-8) above the first note. The second staff contains the accompaniment for these eight measures, with red dots under the first note of each measure. The melody consists of eighth and quarter notes, while the accompaniment features eighth and quarter notes.



# Brown Belt (F#)

Are You Sleeping?

Musical notation for 'Are You Sleeping?' in 2/4 time. The first line is labeled 'A' and contains 8 measures. The second line is labeled 'B' and contains 8 measures. The melody is written in treble clef with a key signature of one sharp (F#). Red dots are placed under the notes in measures 1, 2, 3, 4, 5, 6, 7, and 8 of both sections. The piece ends with a double bar line.

Major / Minor Cross Buns

Musical notation for 'Major / Minor Cross Buns' in 4/4 time. The first line is in the key of D major (one sharp) and contains 4 measures. The second line is in the key of D minor (two flats) and contains 4 measures. Red dots are placed under the notes in measures 1, 2, 3, and 4 of both lines. The piece ends with a double bar line.

Sur le Pont D'Avignon (France)

Musical notation for 'Sur le Pont D'Avignon' in 2/4 time. The melody is written in treble clef with a key signature of one sharp (F#). Red dots are placed under the notes in measures 1, 2, 3, 4, 5, 6, 7, and 8. The piece ends with a double bar line.

Twinkle Twinkle Little Star

Musical notation for 'Twinkle Twinkle Little Star' in 4/4 time. The melody is written in treble clef with a key signature of one sharp (F#). Red dots are placed under the notes in measures 1, 2, 3, 4, 5, 6, 7, and 8. The piece ends with a double bar line.

# Row, Row, Row Your Boat

**A** **B**

9

# Au Clair de la Lune (France)

13

# Jingle Bells

6

1. 2.

# Gray Belt (Low C)

Auld Lang Syne (Scotland)



# Finlandia by Jean Sibelius (1865-1957)



# Amazing Grace

Musical notation for the hymn "Amazing Grace" in 3/4 time, G major. The melody is written on a single staff. The first line contains measures 1 through 8, and the second line, starting with a measure number '9', contains measures 9 through 16. Red dots are placed below the notes in measures 1, 2, 3, 4, 5, 6, 7, 8, 9, 10, 11, 12, 13, 14, 15, and 16.

# Nun Komm, Der Heiden Heiland by Martin Luther (1483-1546)

Musical notation for the hymn "Nun Komm, Der Heiden Heiland" in 4/4 time, G major. The melody is written on a single staff. The first line contains measures 1 through 4, and the second line, starting with a measure number '5', contains measures 5 through 8. Red dots are placed below the notes in measures 1, 2, 3, 4, 5, 6, 7, and 8.

# Oh Susanna

Musical notation for the hymn "Oh Susanna" in 4/4 time, G major. The melody is written on a single staff. The first line contains measures 1 through 5, the second line (starting with a measure number '6') contains measures 6 through 11, and the third line (starting with a measure number '12') contains measures 12 through 16. Red dots are placed below the notes in measures 1, 2, 3, 4, 5, 6, 7, 8, 9, 10, 11, 12, 13, 14, 15, and 16.

# Black Belt (Bb)

## Banana Song (Jamaica)

7

12

## Sailor's Song

9

## Bingo

10

1. 2.

# Mary Ann

Musical notation for the piece "Mary Ann". It consists of two staves in treble clef with a common time signature (C). The first staff contains the first five measures of the melody. The second staff begins with a measure number "6" and contains the next five measures, including a repeat sign at the end of the piece.

# Hey Ho! Nobody Home

Musical notation for the piece "Hey Ho! Nobody Home". It consists of two staves in treble clef with a key signature of one flat (Bb) and a common time signature (C). The first staff contains measures 1 through 4, with section markers "A" and "B" above the first and third measures respectively. The second staff begins with a measure number "4" and contains measures 5 through 8, with section marker "C" above the second measure. The piece ends with a double bar line.

# Buffalo Boy

Musical notation for the piece "Buffalo Boy". It consists of two staves in treble clef with a key signature of one flat (Bb) and a 4/4 time signature. The first staff contains measures 1 through 4. The second staff begins with a measure number "5" and contains measures 5 through 8. The piece ends with a double bar line.

# Rainbow Belt (High E)

Ode to Joy by Ludwig van Beethoven (1770-1827)

Musical notation for 'Rainbow Belt' (High E) in treble clef, key of D major (one sharp), and common time (C). The piece consists of three staves of music. The first staff contains measures 1 through 6. The second staff, starting at measure 7, contains measures 7 through 11. The third staff, starting at measure 12, contains measures 12 through 16. A red dot is placed under the second measure of the third staff.

## Drunken Sailor (England)

Musical notation for 'Drunken Sailor' in treble clef, key of D major (one sharp), and 4/4 time. The piece consists of two staves of music. The first staff contains measures 1 through 4. The second staff, starting at measure 5, contains measures 5 through 8. Red dots are placed under the second and fourth measures of the first staff, and under the seventh and eighth measures of the second staff.

## Loch Lomand (Scotland)

Musical notation for 'Loch Lomand' in treble clef, key of D major (one sharp), and 4/4 time. The piece consists of two staves of music. The first staff contains measures 1 through 4. The second staff, starting at measure 5, contains measures 5 through 8. Red dots are placed under the first and second measures of the first staff, and under the second, third, and fourth measures of the second staff.

# Dona Nobis Pacem

Musical notation for the first three staves of 'Dona Nobis Pacem'. The piece is in 3/4 time and the key of D major (one sharp). The first staff contains measures 1 through 8. The second staff, starting at measure 9, contains measures 9 through 16. The third staff, starting at measure 17, contains measures 17 through 24. The melody consists of quarter and eighth notes, with some slurs and a final blue note in the third staff.

# Old Texas

Musical notation for the first two staves of 'Old Texas'. The piece is in 4/4 time and the key of D major (one sharp). The first staff contains measures 1 through 4, featuring a red note in the first measure and a slur over the second and third measures. The second staff, starting at measure 5, contains measures 5 through 8, also featuring a red note in the first measure and ending with a double bar line.

# Snake Charmer Tune

Musical notation for the first two staves of 'Snake Charmer Tune'. The piece is in 4/4 time and the key of D major (one sharp). The first staff contains measures 1 through 6, featuring a red note in the first measure and a slur over the last two measures. The second staff, starting at measure 7, contains measures 7 through 10, also featuring a red note in the first measure and ending with a double bar line.



# Silver Firs Belt (C#)

## Gypsy Dance

Musical notation for "Gypsy Dance" in 4/4 time, C# major. The piece consists of two staves. The first staff contains four measures of music, and the second staff contains five measures, starting with a measure number '5' above the first note. The melody is characterized by eighth and quarter notes with sharp accidentals.

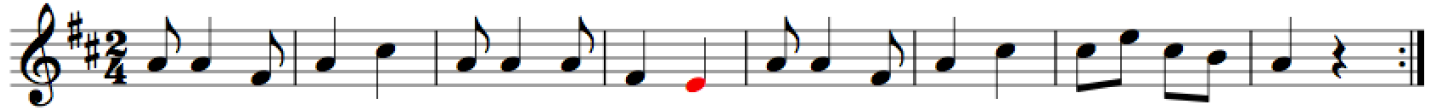
## Seasons Change

Musical notation for "Seasons Change" in 3/4 time, C# major. The piece consists of two staves. The first staff contains five measures of music, and the second staff contains six measures, starting with a measure number '6' above the first note. The melody features eighth and quarter notes, with some notes highlighted in red.

## To Arms

Musical notation for "To Arms" in 3/4 time, C# major. The piece consists of two staves. The first staff contains four measures of music, and the second staff contains five measures, starting with a measure number '5' above the first note. The melody is composed of eighth and quarter notes, with some notes highlighted in red.

# Alabama Gal



# Did You Ever See a Tree?



# Sweet Betsy from Pike

